

MEDICINAL PLANTS IN SIDDHA SYSTEM OF MEDICINE

This CD has Detailed information on 500 plants recommended for BSMS (Bachelor of Siddha Medicine and Surgery) curriculum of Siddha system. This contains information on plant properties, usages, details of formulation, botanical information and plant images.

This CD contains all Tamil synonyms of 500 plants recorded in 26 publications and 8 classical texts pertaining to the Siddha system of medicine. The nomenclature section also incorporates correlation of these plant species with around 25,000 vernacular names in different Indian languages.



Detailed information on 1000 compound formulations incorporated in this CD includes Tamil scripts / padals from the classical texts. Interpretation on preparation and usage of these formulations is also given for easy understanding.

The section relating to the botanical information covers a range of data which includes around 1000 digital images of plants, their botanical descriptions as well as propagation methods, geographical distribution and pharmacology data of species, for which such data is available.

The CD includes a common help file, which contains important articles related to Siddha system and a dictionary on Tamil technical terms used in this CD. There is also a detailed section on pharmaceutical standards.

An inventory of 1450 plant entities used in Siddha is incorporated in this help file with its botanical correlations.

The Bi-lingual (Tamil and English) browsing facility is an added advantage for facilitating the reach and query. This comprehensive CD is recommended for use by the students, teachers, practitioners and researchers of Siddha system of medicine.

MEDICINAL PLANTS IN UNANI

This CD contains information on 307 plants (including the 275 plants recommended for BUMS curriculum) in Unani system of medicine. Five text of Unani medicine have been used for this literary research. A total of 380 plants have been identified as sources of Unani medicine, from these texts. It is estimated that there are around 500 plant entities in Unani medicine. Five Classical text of Unani medicine have been used for this literary research.

The Nomenclature details like Arabic and Urdu name including synonyms and their botanical correlations of the plants are mentioned under the Unani profile part of this CD.

This has information of properties and usages of the plants which are listed under the subheading as Main Therapeutic usage, Therapeutic usage, side effects, substitute and antidote of the drug selected. Usage deals with various indications of the selected plant drug and how to process and administer it under various clinical conditions. Information on Substitutes and dosage is also included.

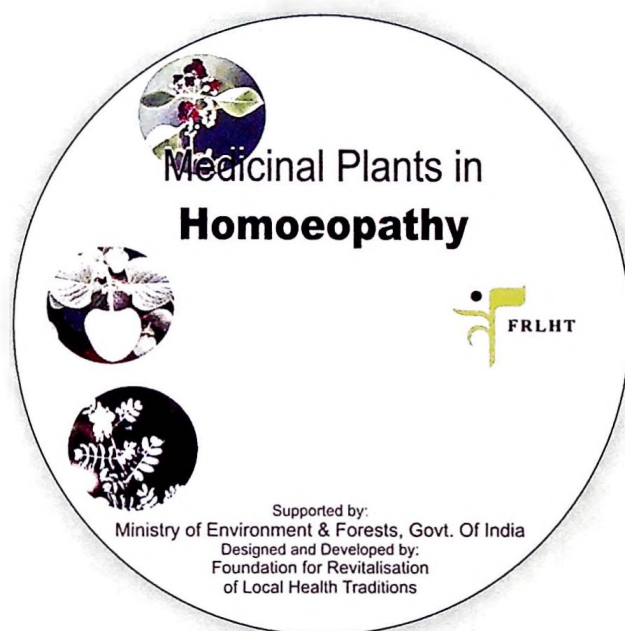


To improve and enhance the identification of specific plant entities 720 digital plant images have been included. The botanical information such as morphology, distribution and propagation methods has also been added. The section on Formulations deals with more than 650 formulations of Unani pharmacopoeia, which are being used, in the industry. The comprehensive search facility provides for querying using Urdu name, botanical name, indications as well as formulation name.

This CD also has a help file which has various important articles related to Unani system of medicine. Selected portions of the Urdu script contents, of the classical texts, have been included for authenticity and incorporated in this help file under Scripts -Urdu Scripts. An inventory of 380 plants used in Unani has been linked to its vernacular names and incorporated in this help file.

MEDICINAL PLANTS IN HOMOEOPATHY

A thorough review and data compilation from available literature (in India) relating to plants used in Homoeopathy has generated a master list of 550 botanical names. After establishing proper synonym linkages, this number has got reduced to 506 plant species. Each of these 506 species have been analysed for its geographical distribution. This has generated a list of 326 species, which have been identified as "recorded in India". It incorporates such species, which are wild in India including naturalized ones and/ or cultivated/ planted in India. The materia medica section deals with the effect of 375 plant drugs (263 Indian & 112 exotic) on various body organs including the mind. Data has been derived from more than 23 published works dealing with materia medica of Homoeopathy.



The Homoeopathic pharmacopoeia of India prepared and published by Ministry of Health & Family Welfare describes the standards for preparation of Homoeopathic mother tinctures. This has been incorporated for selected medicines under the HPI section of the CD.

The botanical information such as morphology, geographical distribution and propagation methods have been included along with more than 1000 digital images of plant entities. Pharmacological data wherever available, has been incorporated for selected plant species.

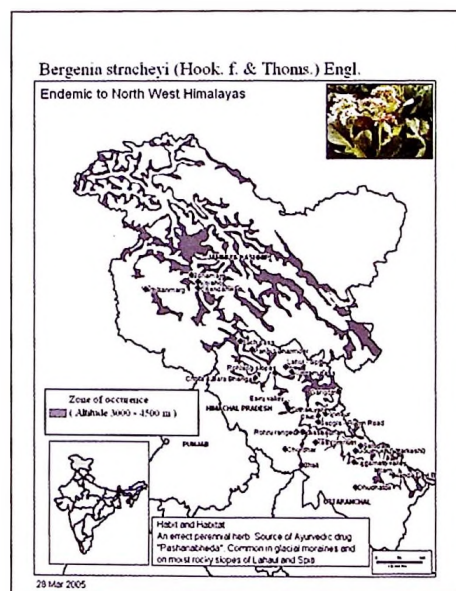
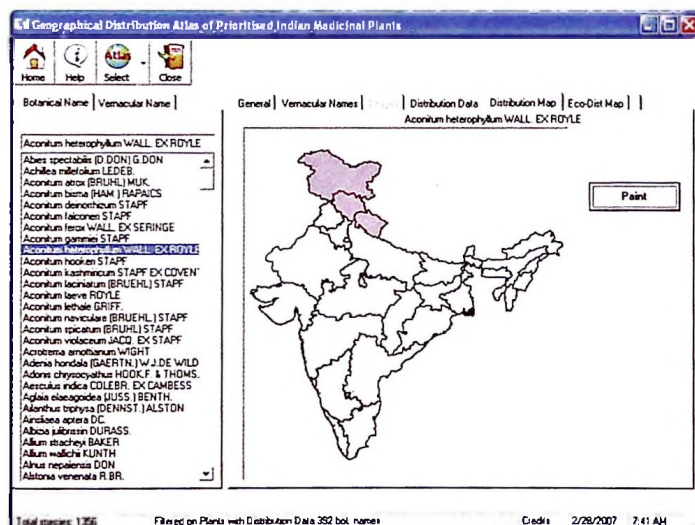
The section on plants helps one to browse through those plants (information on 375 prioritized plants (263 Indian & 112 exotic) which are Indian, foreign, wild, cultivated, cultivated or planted or all of them. This CD also has a help file which has popular articles on various subjects of Homoeopathy.

ATLAS OF GEOGRAPHICAL DISTRIBUTION OF PRIORITISED INDIAN MEDICINAL PLANTS

This CD is specially designed for the Conservationists & the Forest Department and will serve as a ready source of information on Natural Distribution of Medicinal plants within India.

Medicinal Plants occur in different biogeographic zones and for a focused Conservation action programme a proper understanding of distribution range and its pattern is essential. Documenting and mapping the distribution of wild medicinal plant species are the initial steps towards an informed conservation action programme.

A total of hundred and ninety books have been referred & documented during the present study. Literature survey for the mapping exercise included state and district floristic works published until date. Authentic published books, scientific papers & journals were also referred.



The CD contains two types of maps

Geo Distribution Maps for 800+ species: State/Region level mapping

Eco Distribution maps for 100+ species: zone specific and with a special ecological significance.

These maps will provide authentic data on species covering

- Conservation Concern
- Globally Significant Medicinal Plants
- Endemic to specific geographic zones of India,
- Highly traded species which are throughout India
- Species occurring in specific regions of India.



**Foundation for Revitalisation of Local
Health Traditions (FRLHT)**

74/2, Jarakabandekaval, Attur, Yelahanka,
Bangalore 560 064, India, Phone : 080-28568000

Email: info@frlht.org

Web site: www.frlht.org;

Supported by MOEF - New Delhi