

DR. WILLMAR SCHWABE KARLSRUHE · WESTERN GERMANY



BIOCHEMIC COMBINATION TABLETS

COMMUN. HEALTH CELL

Bangalore

**For the Use of
Homoeopathic Medical Practitioners**

COMMUNITY HEALTH CELL
228, V Main, 1 Block
Koramangala
Bangalore-560034 -
India

*The inorganic substances contained
in the blood and tissues suffice to
cure all curable illnesses.*

DR. SCHUSSLER

(Abgek. Therapie, 50th ed., p. 25)

BIOCHEMIC COMBINATION TABLETS "SCHWABE"

Bio-Plasgen No. 1 (*Anaemia*)

Components: Calc. phos., Ferrum phos., Natr. mur., Kali. phos.

Indications: Lack of blood due to undigestible food and to living in unhealthy quarters. Continuous loss of blood from any part of the body. Cerebral and spinal anaemia. A general wasting of the tissues, waxy appearance of the skin; chlorosis, palpitation, tremor and weakness. Anaemia of the brain from a prolonged mental strain.

Dose: Adults 4 tablets, children 2 tablets at a time four times daily at intervals of three hours.

Bio-Plasgen No. 2 (*Asthma*)

Components: Kali. phos., Magn. phos., Natr. mur., Natr. sulf.

Indications: Nervous asthma accompanied by cough, gasping, irregular pulse. Asthma with troublesome flatulence or spasms, convulsive tickling cough. Bronchial asthma with yellow sputum, worse in the evening and in warm rooms, better in cool air.

Dose: Adults 4 tablets, children 2 tablets at a time four times daily at intervals of three hours.

Bio-Plasgen No. 3 (Colic)

Components: Magn. phos., Calc. phos., Natr. sulf., Ferrum phos.

Indications: Colics of infants that cause them to draw up their legs, especially during teething. Colic of children and adults from blockage of the intestines caused by flatulence or constipation with formation of gas. Spasmodic pains so that patient bends double.

Dose: Adults 4 tablets, children 2 tablets at a time four times daily at intervals of three hours.

Bio-Plasgen No. 4 (Constipation)

Components: Calc. fluor., Kali. mur., Natr. mur., Silicea

Indications: Bowels constipated without apparent cause, liver torpid, stools dry, hard and black; dull headache; foul breath and bad taste in mouth; tongue coated.

Dose: Adults 4 tablets, children 2 tablets at a time four times daily at intervals of three hours.

Bio-Plasgen No. 5 (Coryza)

Components: Ferrum phos., Kali. mur., Natr. mur., Kali. sulf.

Indications: Pain in the head, sneezing, continuous thick white discharge from the nose or discharge from the bronchial tubes due to an irritation and severe inflammation of the mucous membranes. Fever, white or grey coated tongue.

Dose: Adults 4 tablets, children 2 tablets at a time four times daily at intervals of three hours.

Bio-Plasgen No. 6 (*Cough, Cold and Catarrh*)

Components: Ferrum phos., Kali. mur., Magn. phos., Natr. mur.,
Natr. sulf.

Indications: Cold in the head; acute catarrh, rattling hollow cough; painful respiration, pain in chest, bronchitis.

Dose: Adults 4 tablets, children 2 tablets at a time four times daily at intervals of three hours.

Bio-Plasgen No. 7 (*Diabetes*)

Components: Calc. phos., Ferrum phos., Kali. phos., Natr. phos.,
Natr. sulf.

Indications: Increased urination, pain in calves, thirst, dry lips, sleeplessness, nervous prostration. All chronic cases with liver disorders. Recommended as a remedy to support the patient's state of health by assimilating the glucose. The kidney and nerve functions impaired by diabetes are improved.

Dose: Adults 4 tablets, children 2 tablets at a time four times daily at intervals of three hours.

Bio-Plasgen No. 8 (*Diarrhoea*)

Components: Calc. phos., Ferrum phos., Kali. phos., Kali. sulf.,
Natr. sulf.

Indications: Thin watery stools with undigested food, thirst, caused by a fat or too rich food. White coated tongue. Prostration. Recommended in convalescence.

Dose: Adults 4 tablets, children 2 tablets at a time four times daily at intervals of three hours.

Bio-Plasgen No. 9 (*Dysentery*)

Components: Ferrum phos., Kali mur., Kali. phos., Magn. phos.

Indications: Pain in the beginning of stools. They contain mucus and blood. There is a constant urge to empty the bowels.

Dose: Adults 4 tablets, children 2 tablets at a time four times daily at intervals of three hours.

Bio-Plasgen No. 10 (*Enlarged Tonsils*)

Components: Calc. phos., Ferrum phos., Kali mur.

Indications: Fever, a feeling of lassitude, pains in the back and limbs; throat lined with a white coating. Tonsils swollen. Tongue coated, bad breath, no appetite.

Dose: Adults 4 tablets, children 2 tablets at a time four times daily at intervals of three hours.

Bio-Plasgen No. 11 (*Fever*)

Components: Ferrum phos., Kali. mur., Natr. mur., Kali. sulf., Natr. sulf.

Indications: All kinds of fever, chills. Initial stages of inflammatory diseases. In quick sudden swellings; pneumonia. Pleurisy and other inflammatory affections that tend to suppuration.

Dose: Adults 4 tablets, children 2 tablets at a time four times daily at intervals of three hours.

Bio-Plasgen No. 12 (*Headache*)

Components: Ferrum phos., Natr. mur., Kali. phos., Magn. phos.

Indications: Headaches due to congestion and a rush of blood to the head, neuralgia. Better for heat, worse for cold. Nervousness as a consequence of worries, sleeplessness, or a low-functioning liver. Worse in the evening or in a warm room, better in the open air.

Dose: Adults 4 tablets, children 2 tablets at a time four times daily at intervals of three hours.

Bio-Plasgen No. 13 (*Leucorrhoea*)

Components: Calc. phos., Kali. sulf., Kali. phos., Natr. mur.

Indications: All forms of leucorrhoea during puberty, pregnancy and in the climacteric; in states of general weakness and hysteria.

Dose: 4 tablets at a time four times daily at intervals of three hours.

Bio-Plasgen No. 14 (*Measles*)

Components: Ferrum phos., Kali. mur., Kali. sulf.

Indications: Sneezing and thin discharge from nose; eyes are watery, fever. A help in all stages of the disease.

Dose: Adults 4 tablets, children 2 tablets at a time four times daily at intervals of three hours.

Bio-Plasgen No. 15 (*Menstruation Troubles*)

Components: Calc. phos., Ferrum phos., Kali phos., Magn. phos., Kali. sulf.

Indications: Menses painful and irregular, scanty and late in young women. Menses early, long-lasting and profuse in middle-aged women.

Dose: 4 tablets at a time, four times daily at intervals of three hours.

Bio-Plasgen No. 16 (*Nervous Exhaustion*)

Components: Calc. phos., Ferrum phos., Kali. phos., Magn. phos.,
Natr. mur.

Indications: Nervous exhaustion and fatigue from any cause. A general weakness of the heart, stomach and nervous system. Sleeplessness.

Dose: Adults 4 tablets, children 2 tablets at a time four times daily at intervals of three hours.

Bio-Plasgen No. 17 (*Piles*)

Components: Calc. fluor., Kali. phos., Ferrum phos., Kali mur.

Indications: An approved remedy against haemorrhoidal knots, all kinds of piles. External piles with stinging pains. Bleeding piles with or without pain.

Dose: Adults 4 tablets, children 2 tablets at a time four times daily at intervals of three hours.

Bio-Plasgen No. 18 (*Pyorrhoea*)

Components: Calc. fluor., Silicea, Calc. sulf.

Indications: Gums are spongy, swollen and inflamed; they bleed easily. Pus in the gums, foul breath.

Dose: 4 tablets at a time, four times daily at intervals of three hours.

Bio-Plasgen No. 19 (*Rheumatism*)

Components: Ferrum phos., Magn. phos., Kali. sulf., Natr. sulf.

Indications: Shooting and stabbing pains in the joints of legs or arms, worse at night. Fever, lumbago, sciatica, muscular rheumatism.

Dose: Adults 4 tablets, children 2 tablets at a time four times daily at intervals of three hours.

io-Plasgen No. 20 (*Skin Diseases*)

Components: Calc. fluor., Calc. sulf., Kali. sulf., Natr. mur., Natr. sulf.

Indications: Scurfy eruptions on the scalps and in the faces of children, eczemas due to uterine derangements, acne, pemphigus, herpes, erysipelas, crusta lactea and similar eruptive diseases.

Dose: Adults 4 tablets, children 2 tablets at a time four times daily at intervals of three hours.

io-Plasgen No. 21 (*Teething Troubles*)

Components: Calc. phos., Ferrum phos.

Indications: Children are crying, obstinate and naughty during the time of teething. These tablets make the cutting of teeth easy and quick by supplying important salts to the baby. The appetite is improved and the digestion favoured. The tablets build the babies and abolish griping.

Dose: Children are given 2 tablets four times daily at intervals of three hours.

io-Plasgen No. 22 (*Scrofula*)

Components: Calc. phos., Ferrum phos., Kali. mur., Silicea

Indications: Both dry and suppurating scrofulous glandular abscesses. Almost all symptoms of the disease are covered.

Dose: Adults 4 tablets, children 2 tablets at a time four times daily at intervals of three hours.

io-Plasgen No. 23 (*Toothache*)

Components: Ferrum phos., Magn. phos., Calc. fluor.

Indications: Recommended especially in neuralgic cases. Favourable effect in rheumatic toothache.

Dose: Adults 4 tablets, children 2 tablets at a time four times daily at intervals of three hours.

Bio-Plasgen No. 24 *Tonic: Nerves and Brain*)

Components, Calc. phos., Ferrum phos., Kali. phos., Magn. phos.,
Natr. phos.

Indications: A general tonic for all chronically wasting diseases; anaemia of young quickly growing people. Recommended for women who have been weakened by frequent childbearing. General debility and exhaustion with a lack of vitality.

Dose: Adults 4 tablets, children 2 tablets at a time four times daily at intervals of three hours.

Bio-Plasgen No. 25 *(Acidity, Flatulence and Indigestion)*

Components, Natr. phos., Natr. sulf., Silicea

Indications: Gastric disturbances, acidity, flatulence, dyspepsia; acid, sour risings; feeling of weight in abdomen; bilious vomiting; flatulent colics; headache; jaundice.

Dose: Adults 4 tablets, children 2 tablets at a time four times daily at intervals of three hours.

Bio-Plasgen No. 26 *(Easy Parturition)*

Components, Magn. phos., Calc. phos., Kali. phos., Calc. fluor.

Indications: If taken during the entire time of pregnancy these tablets will greatly relieve the pains of labour. They also favour the mother's general state of health and assist in the development and health of the child. They may also prevent miscarriage.

Dose: 4 tablets at a time four times daily at intervals of three hours.

Bio-Plasgen No. 27 (*Weakness of Vitality*)

Components: Natr. mur., Kali. phos., Calc. phos.

Indications: Impotence, depression of sexual instinct, lassitude and general debility; emissions followed by trembling and weakness. Too early ageing. The entire sexual system is toned up.

Dose: 4 tablets at a time four times daily at intervals of three hours.

Bio-Plasgen No. 28 (*General Tonic*)

Components: All twelve Tissue Remedies.

Indications: These tablets contain the twelve Tissue Remedies found in the human organism. They are of great help for those suffering from consumption and other debilitating diseases, for convalescents from fever, pneumonia, diarrhoea etc. as they help to build up the system by supplying the necessary tissue nutrition. Weak and old people take them as a tonic after meals. The continuous use of these tablets will keep off disease.

Dose: 2 tablets three or four times daily, half an hour before or after meals and at bedtime.

The various components of the above combinations are present in the quantities and concentrations that have been tested and approved in practice.

638 DR-435

638 COMMUNITY HEALTH CELL 11

47/1, (First Floor) St. Marks Road,

Bangalore - 560 001.

CRATAEGUTT

Crataegus-preparation to stimulate the coronary circulation and the metabolism of the myocardium.

Incipient myocardial insufficiency, stenocardia and mild coronary insufficiency. Regulator in hypertension. Toxicoinfectious disorders of the myocardium. To support the digitalis and strophanthin therapy.

8-10 (up to 15) drops three times a day after meals.

Original Packings ctg. 20 and 50 cc.

TONSIOTREN

Mercur. bijodat., Belladonna, Hepar sulf., Kal. bichrom., Silicea.

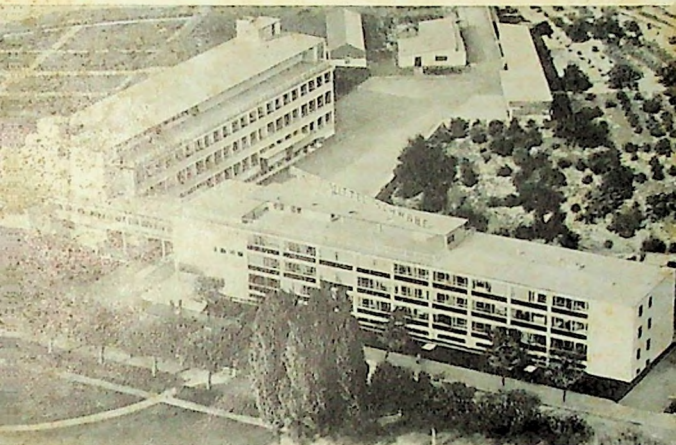
Acute and chronic inflammations of the tonsils and side-cavities.

1-2 tablets three times a day, to be dissolved in the mouth. In acute cases every two hours. In hyperplasia 2-3 tablets a day for a longer time.

Original Packing ctg. 80 tablets.

Ask for medical samples at

DR. WILLMAR SCHWABE GMBH, KARLSRUHE
Western Germany



DR. WILLMAR SCHWABE, KARLSRUHE

Western Germany

Established at Leipzig in 1866

The new works at Karlsruhe were
built in 1954

COMMUNITY HEALTH CELL
225, V Main, 1 Block
Koramangala
Bangalore-560034 -
India



Dr. Willmar Schwabe's

Original Packing of Biochemie Combination Tablets

DR. WILLMAR SCHWABE GMBH
KARLSRUHE
Western Germany

Manufacturers of medicines since 1866

Printed in Western Germany